

Family farms - the basis of European agriculture

18th October 2019, Telč

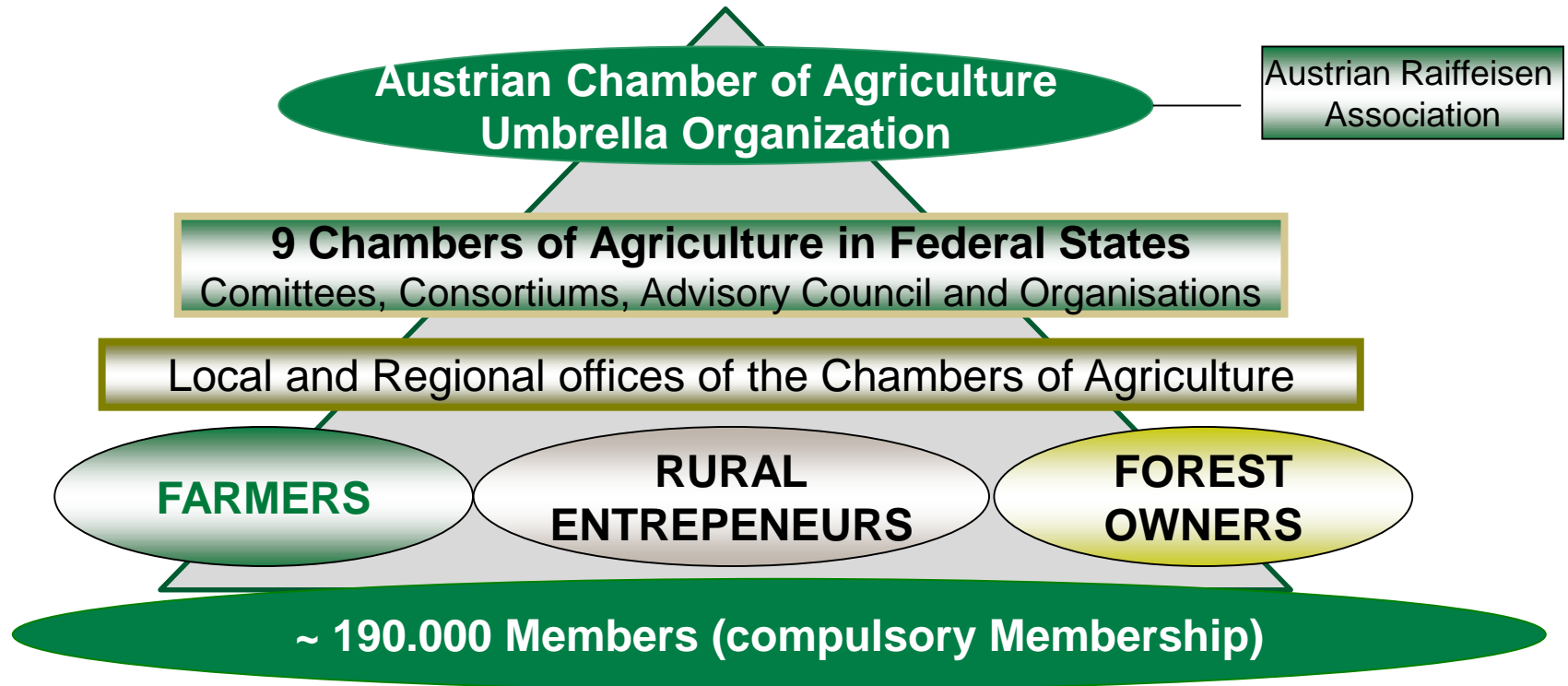
Thomas Maximilian Weber

Austrian Chamber of Agriculture

t.weber@lk-oe.at



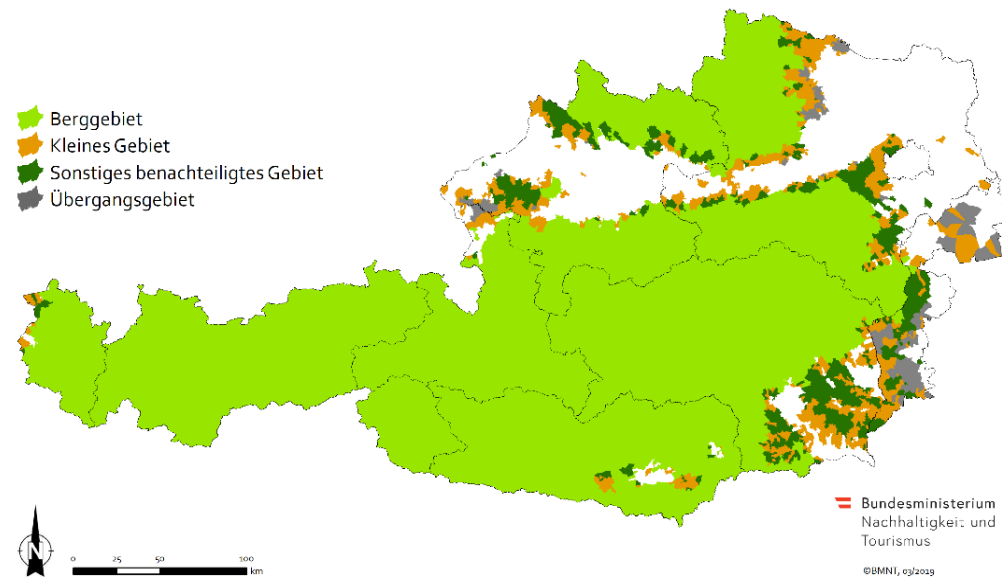
Austrian Chamber of Agriculture – Structure, Targets



Main Targets: Interest Representation, Administrative Tasks, Training, Advisory Services

Agricultural and forestry holdings in Austria (FSS 2016)

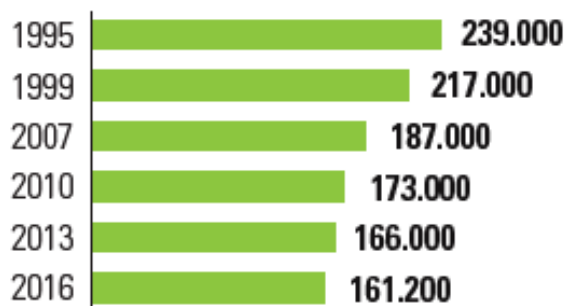
- **161.200** agricultural and forestry **holdings**
- Total area 7.3 million ha
 - UAA: **2.7 million ha**
 - 48% permanent grassland
 - 50% arable land
 - 2% special crops
 - Forest: 3.4 million ha
- **90 %** of the area under **AECM**
- 75 % of holdings in areas with natural constraints (ANCs)
- **Organic farming**: 20% of farms on 25% of UAA



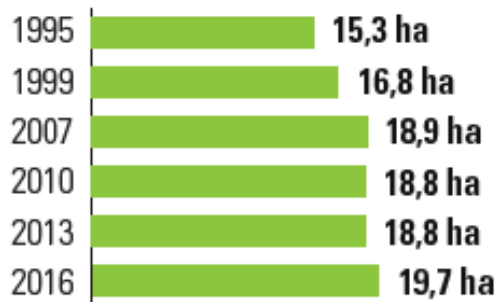
Agricultural and forestry holdings in Austria (FSS 2016)

Trend 1995 – 2016

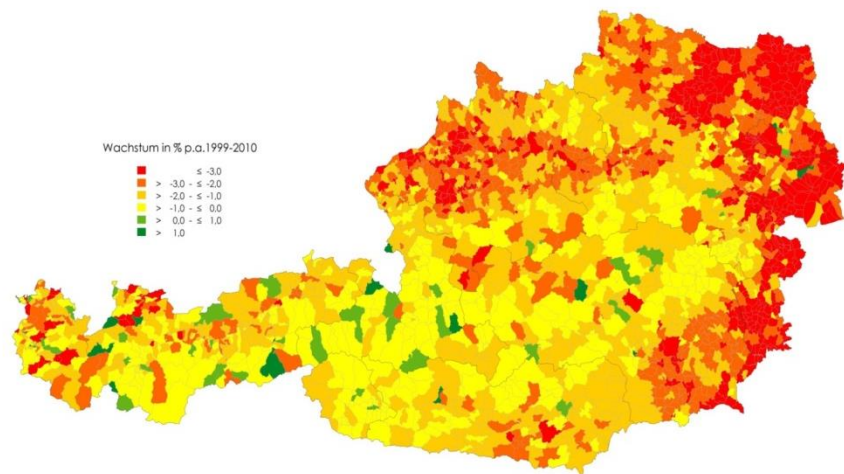
Number



Average size of farms

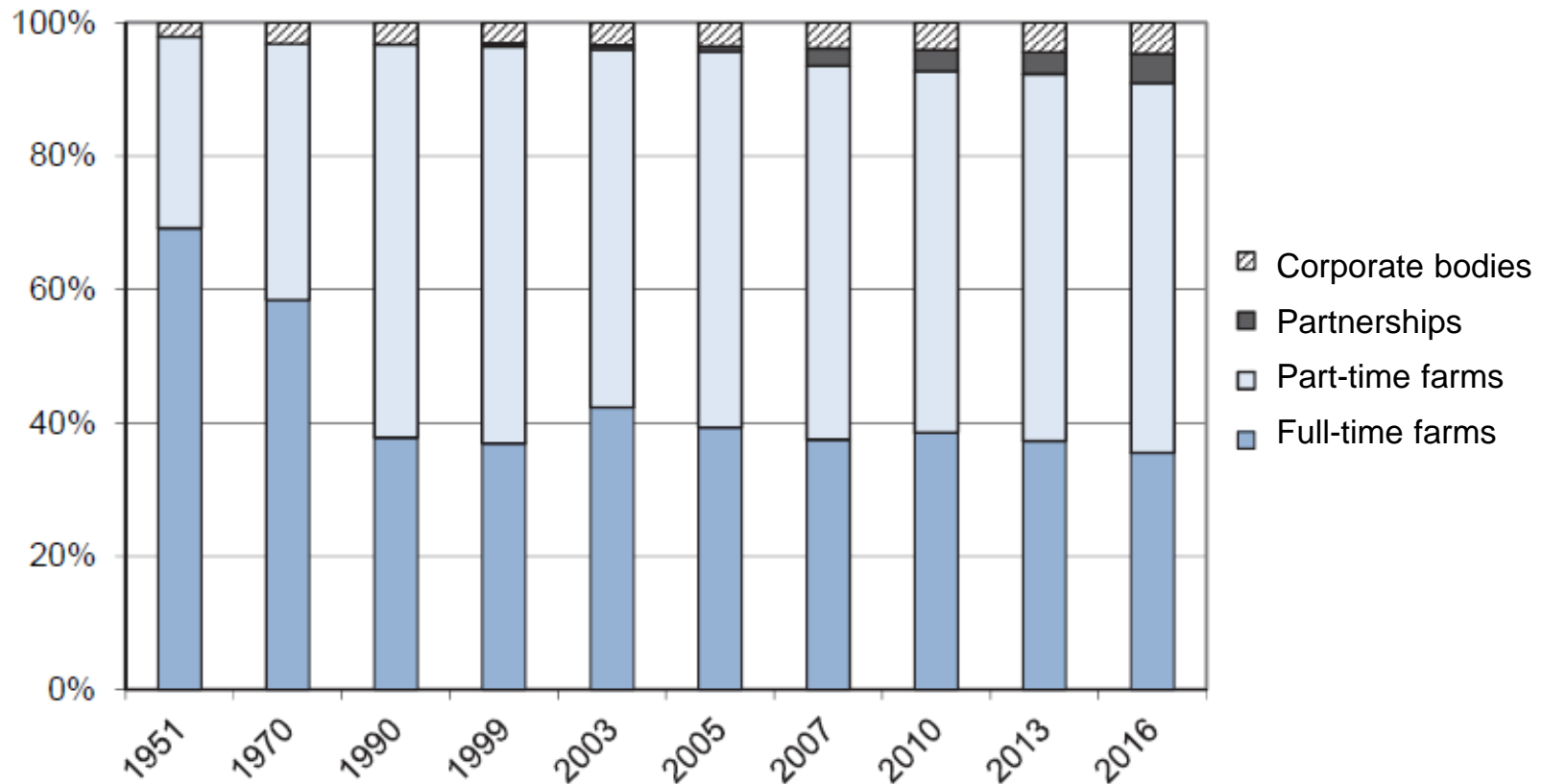


- Average UAA area **19,7 ha**
- On average **32 cows** per farm
- funds in agriculture: **60% for rural development** and 40% for direct payments
- Ultimate target: **Comprehensive Agriculture and Forestry**
- Full internal convergence since 2019



Source: Statistics Austria, LKÖ

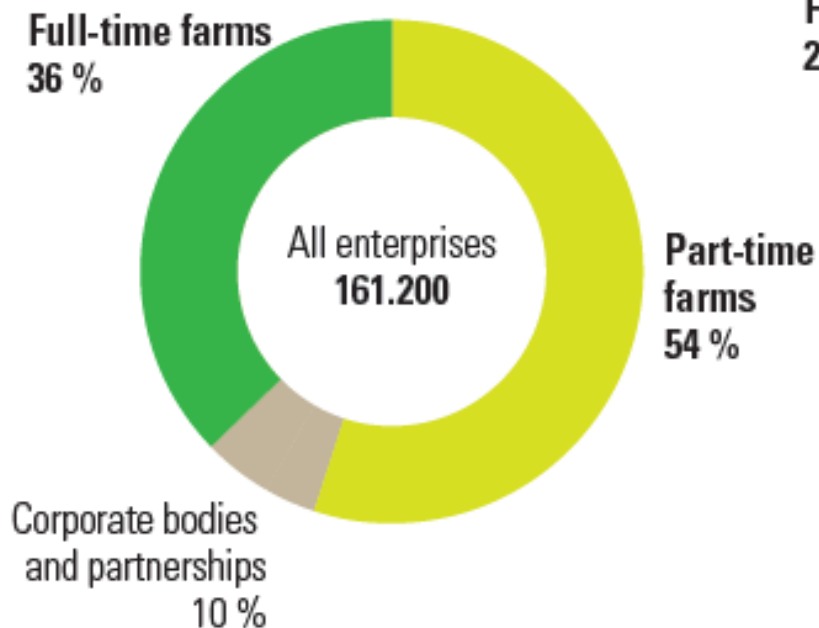
Holdings according to types of occupation in Austria 1951 - 2016



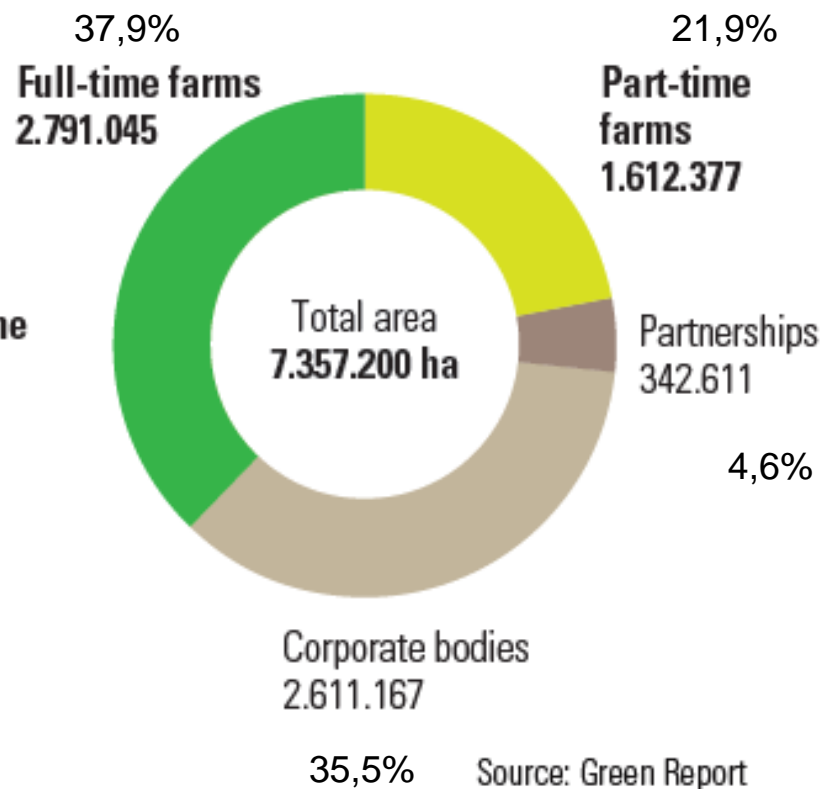
Q: STATISTIK AUSTRIA, Land- und forstwirtschaftliche Betriebszählungen, Agrarstrukturerhebungen.

Holdings according to types of occupation 2016

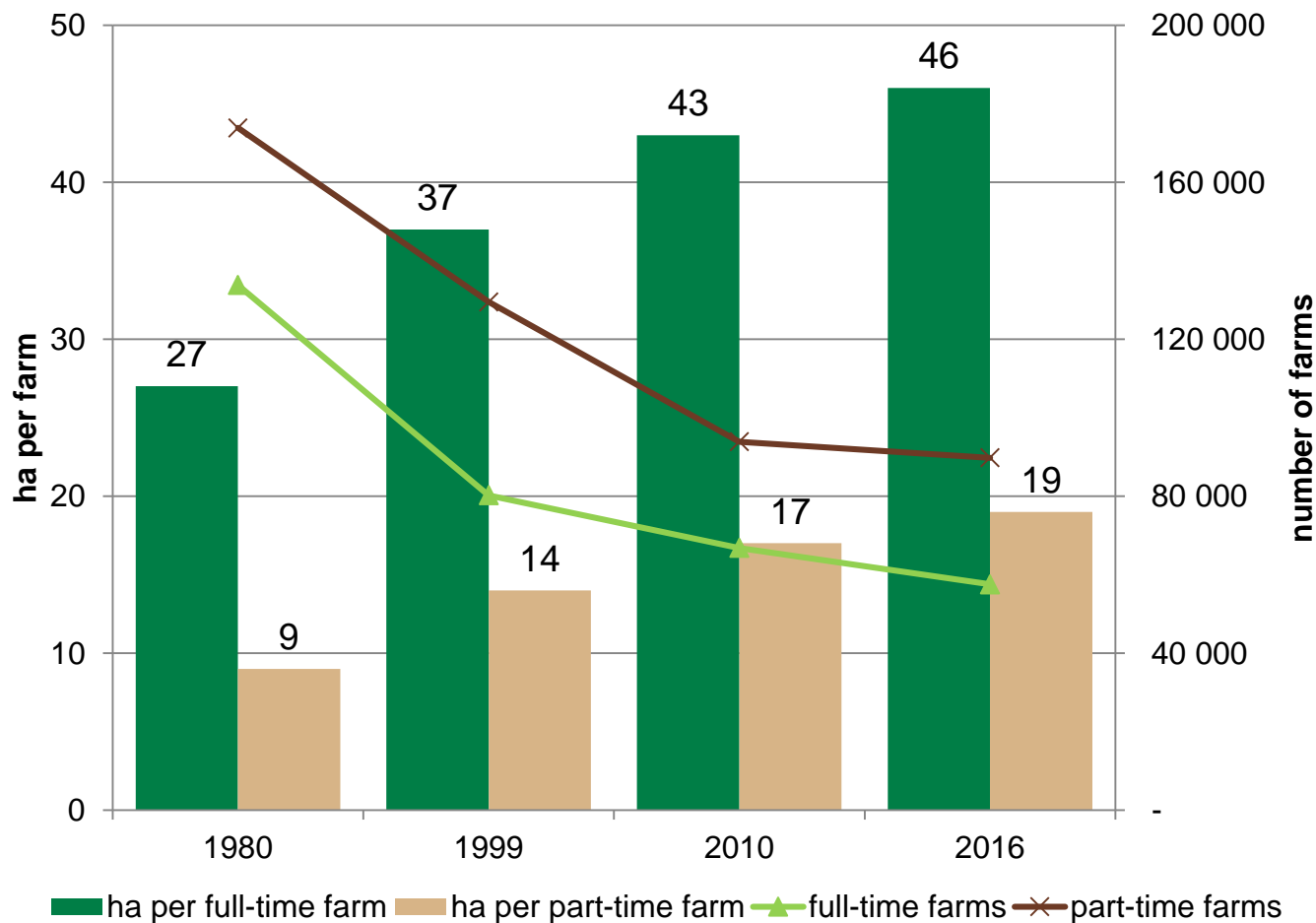
Enterprises



Area in ha



Development of family farms in Austria 1980-2016



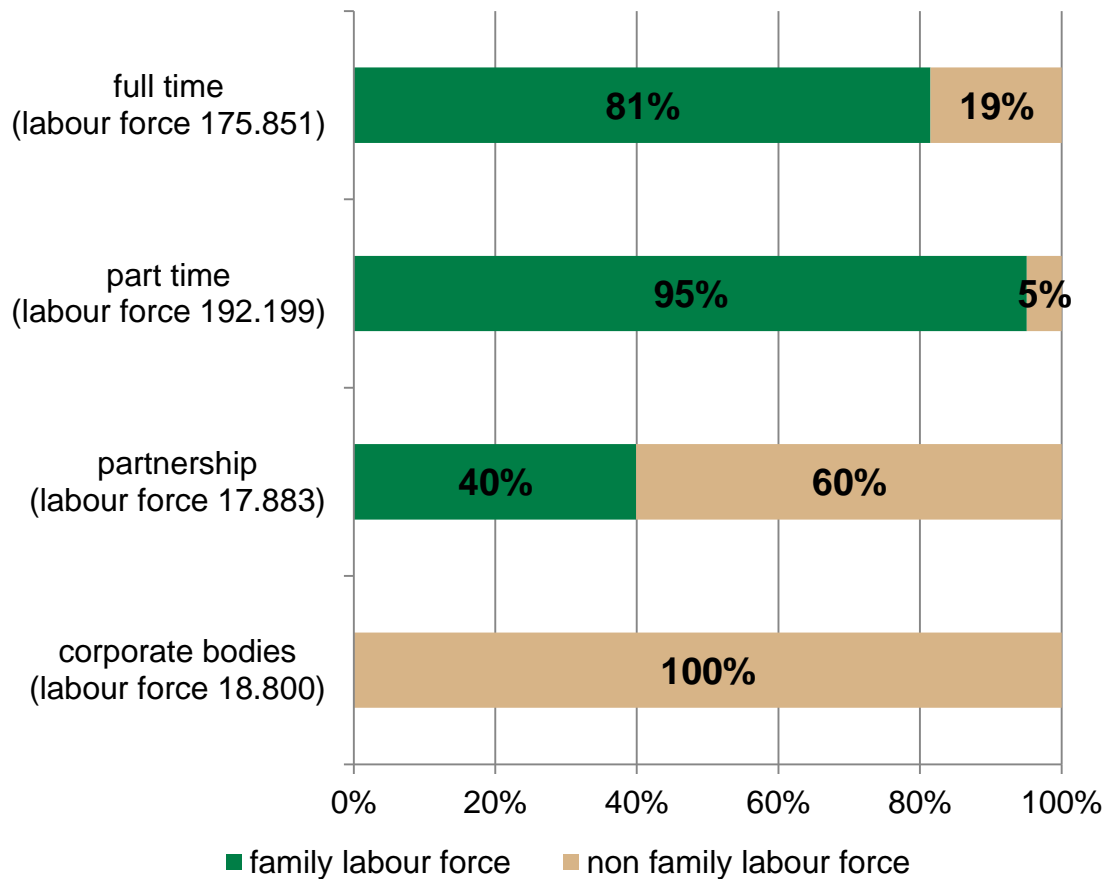
1980 – 2016
 -48% of farms
 or
 -146.228
 farms

Source: Statistik Austria, agricultural structure survey 2016

Agricultural structure in Austria on the border to ??



Family labour force of family farms versus other legal types of farming, 2016



Average labour force per farm

- Full-time farm 3.1
- Part-time farm 2.1
- Partnership 2.5
- Corporate bodies 2.5

Diversification as one key to success

- Direct marketing: 1/3 of all family farms (46,000 farms, e.g. farm gate sale, farmers markets, cooperation with gastronomy)



- „Holidays on the farm”



- 2.700 members
- > 10.000 family farms with tourism activities

- “School on the farm”



- “Green care”: family farms with care, education or social work services



National CAP-strategic plan Implementation/timeline

- Kick-off event for general public on 13. May 2019
- At the moment: **Finalization of SWOT-Analysis** + ex-ante evaluation
- Autumn 2019: Start of technical work in several **thematic expert groups** (state, federal states, experts)
- Expected start for **new program 01.01.2022**
- 2021: **transition year** -> old program with new money



LKÖ position on CAP 2020+ I

- System of **incentives** instead of system of sanctions
- Practical definition of „grassland“ (problem with grassland becoming arable land)
- Definition of **genuine farmer**
 - Maintain definition of active farmer of the **Omnibus-Regulation** (2017/2393)
 - Main criteria -> proper management of land and keeping of farm animals
 - **no additional bureaucracy** for farmers
- Abandonment of the system of payment entitlements
- **degresivity and capping** of DP -> only 100 farms affected in AT

LKÖ position on CAP 2020+ II

- **No or few coupled payments** -> quality schemes in second pillar
- Either a comprehensive small farmers scheme or a redistributive payment for first hectares
- **Partial derogations from conditionality for small farmers**
- Well-funded top-up for young farmers in first pillar
 - -> keep support for young farmers on same level as this period -> 2%
- Transfer FaST (**GAEC 5**) into FAS
- **No transfer** of amounts between direct payments and EAFRD

LKÖ position on CAP 2020+ III

- Additional **quality schemes** in second pillar
- Lump sum costs for support in investments
- **risk management tools** should be **voluntary** in CAP
- Strong and well-funded second pillar
- Focus on production of **high quality** food and indication of origin

- Commitment of Ministry of Agriculture to **strengthen family farms**

Considerations on eco scheme and AECM

- Maintain and further develop our **AECM program** (24 different measures in period 14-20)
- Many „small“ measures -> possibility to combine on voluntary base
- Additional specific measures for **biodiversity**
 - Maybe different measures with focus on birds, insects, plants
- Additional measures in order to fulfill the **NEC directive**
- No measures on regional level (as before only **on farm level**)

- National discussions on **eco schemes** just started -> LKÖ in favor of **voluntary implementation** if high participation in AECMs in MS

ÖPUL 2015 - Austria's agri-environmental programme



MEASURE OVERVIEW ÖPUL 2015 (ACCORDING TO ART. 28, 29, 30 AND 33 OF EU-REGULATION 1305/2013 IN THE CONTEXT OF THE AUSTRIAN RURAL DEVELOPMENT PROGRAMME 2014-2020) Austrian programme to promote an environmentally friendly, extensive and habitat-protecting agriculture 2017+

General measures	Arable land		Grassland	Others	
Environmentally friendly and biodiversity promoting management	Greening of arable land/ intermediate crops	Greening of arable land/ system „Evergreer“	Renoucement of silage	Erosion protection in vineyards, fruits and hops	Animal welfare/ grazing of livestock art. 33 of EU-Reg. 1305/2013
maintainance of landscape elements and grassland, min. 5% biodiversity-areas, crop rotation, max. 66% of one crop, education GL: 45 (15) €/ha A: 45 (450) €/ha A-blooming crops: 165 €/ha 6 €/LSE %/ha	yearly, area-wide greening of arable land (min. 10% of arable land) according to different periods (variants), renoucement of nitrogen fertilizers and pesticides in intermediate crops A: 160 (120-200) €/ha intermediate crop, 200 €/ha for blooming bee-crops	area-wide greening (min. 85% of arable land), max. period without greening 50 days, documentation, renoucement of nitrogen fertilizers and pesticides in intermediate crops A: 80 €/ha	renoucement of silage making and storage Mowed GL and arable-forage: 80 €/ha for animal-keepers, 150 €/ha for milk-animal-keepers	yearly, area-wide greening of machine tracks in vineyards, fruits and hops or at minimum winter-greening of hops and wine in case of a gradient < 25 % of the slope, documentation P: 200 (100-800) €/ha fruit, wine and hops, according to variant and gradient of area	min. 120 days grazing of livestock on pastures (between 01.04. und 15.11.), documentation 55 €/LU for cattle, sheep and goats, max. 4 LU/ha, ½ premia in case of simultaneous mountain grazing of the animal
Organic farming art. 29 of EU-Reg. 1305/2013	Preventative groundwater protection (regional)	Direct seeding and seeding on mulch	Mountain grazing and herding	Pesticide renoucement in vineyards and hops	Animal welfare/ stable (starting 2017) art. 33 of EU-Reg. 1305/2013
compliance with EU-Organic-Reg. and acknowledgement as organic farm, maintenance of landscape elements and grassland; education GL: 225 (70) €/ha A: 230 (350, 450) €/ha P: 700 €/ha LSE: 6 €/LSE%/ha organic bees: 25 €/hive	Arable land: reduced fertilization, extended period without nitrogen fertilization, documentation, education, soil-samples Grassland: reduced fertilization, renoucement of grassland-conversation, documentation, education, soil-samples A: 100 (110, 130) €/ha GL: 100/70 €/ha	participation on greening of arable land, yearly sowing by erosion-reduction sowing-methods (mulch-seeding, direct-seeding, strip-till) after an intermediate crop, sowing a main crop within 4 weeks after soil working A: 60 €/ha for erosion-endangered crops (e.g. maize, sugarbeet)	Grazing: Min. 60 days grazing on alpine pastures, max. 2,0 LU/ha, closed nutrient circles, renoucement of nitrogen fertilizers and pesticides (exempt organic-prod.) Herding: Daily herding of animals grazing on alpine pastures Alpine-G: 40 (50,60 €/ha), Herding 20-190 €/LU	participation in Erosion protection in vineyards, fruits and hops, renoucement of insecticides and/or herbicides (combinable) P: 250 €/ha (insecticides) P: 250 €/ha (herbicides)	increased space in the stable, solid floor in laying area, soft bedding material 180 €/LU for cattle, 150/120 in case of simultaneous mountain-grazing/grazing 65 €/LU for fattening pigs 80 €/LU for breeding sows
Limitation of yield increasing inputs *	Preventative surface water protection on arable land (regional)	Management of arable areas particularly threatened by leaching	Cultivation of mowed mountain-grassland **	Use of beneficial organisms in greenhouses	Maintenance of endangered livestock breeds
renoucement of nitrogen fertilizers on the whole farm and renoucement of pesticides on grassland, Organic-products are allowed GL/A/P: 60 €/ha, no premia for non-animal-keepers	establishing a minimum 12 m buffer strip adjacent to polluted surface rivers, renoucement of nitrogen fertilizers and pesticides on these strips, yearly cultivation, no pasture A: 450 €/ha	establishing a permanent green cover on areas threatened by leaching, renoucement of nitrogen fertilizers and pesticides on these areas, yearly cultivation, no pasture A: 450 €/ha	steep slopes >50%: yearly mowing, mowed mountain grassland (>1.200m altitude); yearly mowing, renoucement of nitrogen fertilizers and pesticides GL: Steep slopes 370 €/ha, GL: Mountain GL: 350-800 €/ha	yearly, area-wide use of beneficial organisms in at least one green-house that replace pesticide use GH on soil: 1.000 €/ha GH not on soil: 2.000 €/ha	keeping and breeding of endangered animals, e.g. Pinzgauer-, Murboden-, Grauvieh-cattle, Brillenschaf, Gebirgsziege; Keeping min. 01.04. – 31.12., documentation e.g. cows: 180/210/280 €/animal
Nature conservation **	Cultivation of rare agricultural plants **	Renoucement of fungicides and growth regulators *	Natura 2000 – Agriculture art. 30 of EU-Reg. 1305/2013	Surface-near spreading of liquid farm manure	
management of sensible areas according to specific obligations (set by the nature conservation authority), optional integration into regional or result oriented nature conservation plan GL: < 900 €/ha, A: < 700 €/ha	cultivation of rare agricultural crops according to a crop list (e. g. spelt, rye, clover, poppy), documentation A: 120 (200) €/ha	renoucement of fungicides and growth regulators in cereals A: 40 €/ha cereals	relevant mandatory requirements for area management and cultivation according to these requirements GL: 37-270 €/ha and requirement	surface-near spreading of liquid farm manure (min. 50% of spreaded liquid farm manure), documentation A, GL: 1 (1,20) €/m ² , max. 30m ² /ha	

*... Mandatory combination with measure "Environmentally friendly and biodiversity promoting management"

**... Mandatory combination with measure "Environmentally friendly and biodiversity promoting management" or "Organic farming"

Abbreviations: GL = grassland, A = arable land, P = permanent crops, GH = greenhouse, LSE = landscape elements; LU = livestock units

Premias are shown for main premia categories, e.g. grassland with animals, main arable crops.

In brackets more possible premia are shown, which are applicable for special crops/commitments.



**Thank you
for your
attention!**

#174702560